

The Cranbury

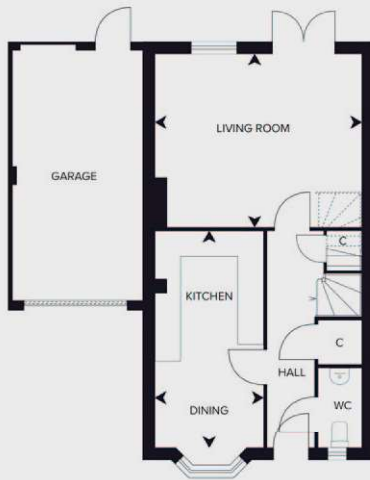
Plots: **5** **6***

3 bedroom link-detached homes

*Plot 6 is handed/ mirrored

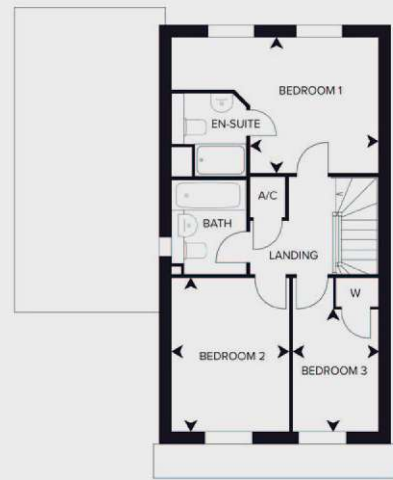


Computer generated image is indicative only



Ground Floor

Room	Dimensions (metric)	Dimensions (imperial)
Kitchen/Dining	2544 x 5157	8'3" x 16'10"
Living	4847 x 4097	15'10" x 13'4"



First Floor

Room	Dimensions (metric)	Dimensions (imperial)
Bedroom 1	3019 x 3177	9'10" x 10'4"
Bedroom 2	2760 x 3650	9' x 11'11"
Bedroom 3	1994 x 2910	6'6" x 9'6"



All dimensions are maximum and these plans are for representation purposes only and may be subject to change. Whilst every attempt has been made to ensure the accuracy of the plans, details and measurements are approximate and no responsibility is taken for any error, omission or mis-statement. Floorplans may be mirrored/handed for alternate plots.