

The Highclere

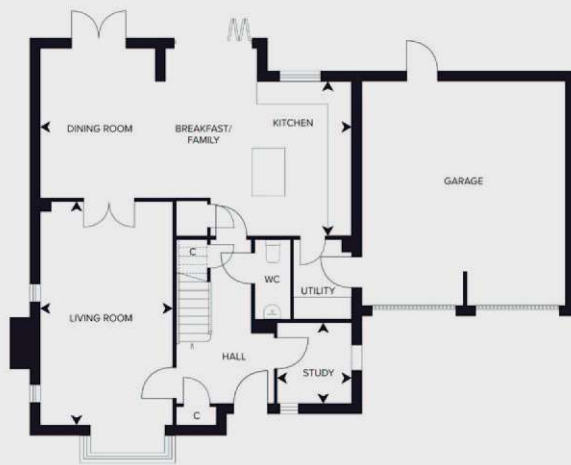
Plots: **3** **4** **21***

4 bedroom detached homes

*Plot 21 is handed/mirrored

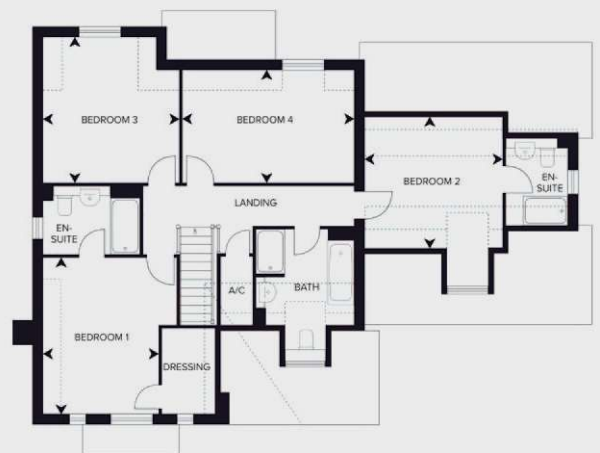


Computer generated image is indicative only and shows plot 21



Ground Floor

Room	Dimensions (metric)	Dimensions (imperial)
Kitchen/Dining	8447 x 4184	27'8" x 13'8"
Living	3550 x 6047	11'7" x 19'9"
Study	2010 x 2197	6'6" x 7'2"



First Floor

Room	Dimensions (metric)	Dimensions (imperial)
Bedroom 1	3134 x 4260	10'3" x 13'11"
Bedroom 2	3744 x 3384	12'3" x 11'1"
Bedroom 3	3694 x 3950	12'1" x 12'11"
Bedroom 4	4660 x 3060	15'3" x 10'

Bay window to plots 4 and 21 | Reduced headroom due to sloped ceiling

All dimensions are maximum and these plans are for representation purposes only and may be subject to change. Whilst every attempt has been made to ensure the accuracy of the plans, details and measurements are approximate and no responsibility is taken for any error, omission or mis-statement. Floorplans may be mirrored/handed for alternate plots.

