

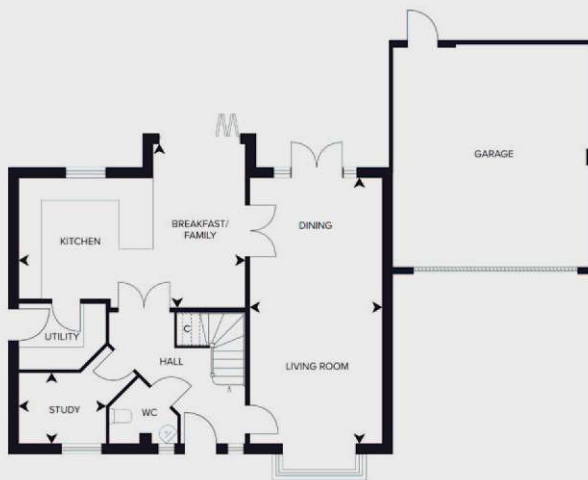
The Oakleigh

Plots: 16 19

4 bedroom detached homes

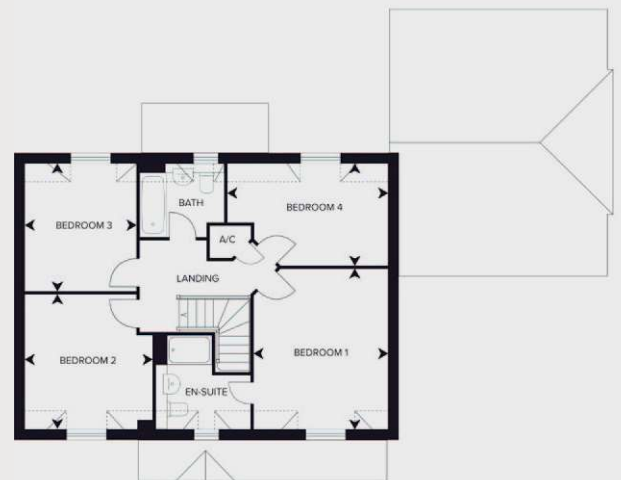


Computer generated image is indicative only and shows plot 19



Ground Floor

Room	Dimensions (metric)	Dimensions (imperial)
Kitchen/Dining	6159 x 4409	20'2" x 14'5"
Living	3600 x 7209	11'9" x 23'7"
Study	2360 x 1860	7'8" x 6'1"



First Floor

Room	Dimensions (metric)	Dimensions (imperial)
Bedroom 1	3657 x 4346	11'11" x 14'3"
Bedroom 2	3494 x 3656	11'5" x 11'11"
Bedroom 3	3050 x 3460	10' x 11'4"
Bedroom 4	4360 x 2770	14'3" x 9'

Floorplan shows location of garage for plot 19 | Reduced headroom due to sloped ceiling

All dimensions are maximum and these plans are for representation purposes only and may be subject to change. Whilst every attempt has been made to ensure the accuracy of the plans, details and measurements are approximate and no responsibility is taken for any error, omission or mis-statement. Floorplans may be mirrored/handed for alternate plots.

