

# The Ormeley

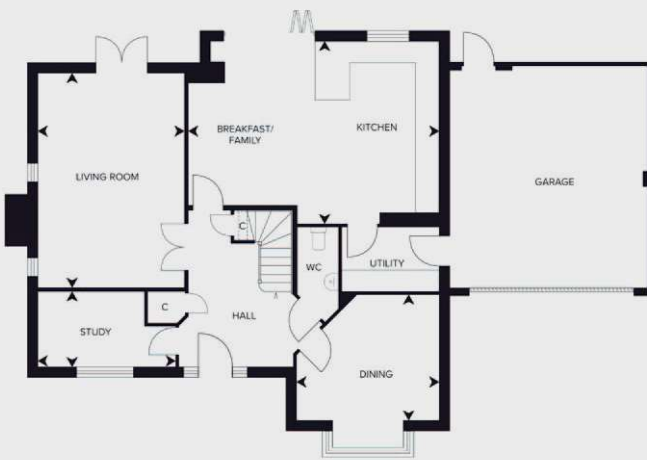
Plots:

- 1
- 2
- 20

5 bedroom detached homes



Computer generated image is indicative only and shows plot 20



## Ground Floor

Room	Dimensions (metric)	Dimensions (imperial)
Kitchen	6822 x 4959	22'4" x 16'3"
Living	3950 x 5834	12'11" x 19'1"
Dining	3824 x 3397	12'6" x 11'1"
Study	3760 x 2050	12'3" x 6'8"

Reduced headroom due to sloped ceiling

All dimensions are maximum and these plans are for representation purposes only and may be subject to change. Whilst every attempt has been made to ensure the accuracy of the plans, details and measurements are approximate and no responsibility is taken for any error, omission or mis-statement. Floorplans may be mirrored/handed for alternate plots.



## First Floor

Room	Dimensions (metric)	Dimensions (imperial)
Bedroom 1	4533 x 3501	14'10" x 11'6"
Bedroom 2	3160 x 4170	10'4" x 13'7"
Bedroom 3	3160 x 3644	10'4" x 11'11"
Bedroom 4	3341 x 3247	10'11" x 10'7"
Bedroom 5	3043 x 2581	9'11" x 8'5"

