

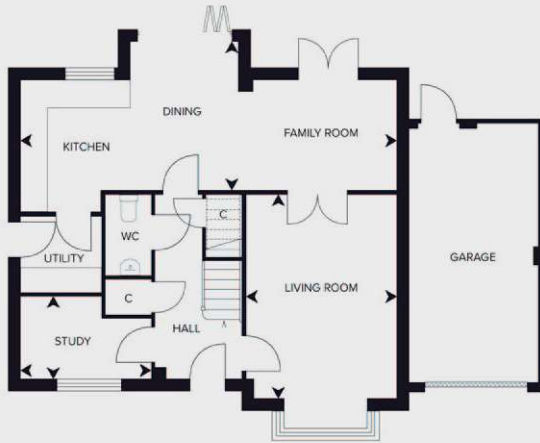
The Selbourne

Plots: 14 15

4 bedroom detached homes

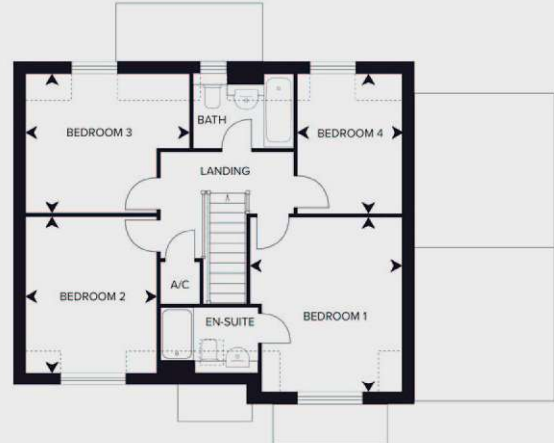


Computer generated image is indicative only and shows plot 15



Ground Floor

Room	Dimensions (metric)	Dimensions (imperial)
Kitchen/Dining	8784 x 3450	28'9" x 11'3"
Living	3475 x 4735	11'4" x 15'6"
Study	3044 x 1907	9'11" x 6'3"



First Floor

Room	Dimensions (metric)	Dimensions (imperial)
Bedroom 1	3532 x 4082	11'6" x 13'4"
Bedroom 2	3056 x 3632	10' x 11'10"
Bedroom 3	3796 x 3260	12'5" x 10'7"
Bedroom 4	2410 x 3260	7'10" x 10'7"

Floorplan shows location of garage for plot 14 | Reduced headroom due to sloped ceiling

All dimensions are maximum and these plans are for representation purposes only and may be subject to change. Whilst every attempt has been made to ensure the accuracy of the plans, details and measurements are approximate and no responsibility is taken for any error, omission or mis-statement. Floorplans may be mirrored/handed for alternate plots.

