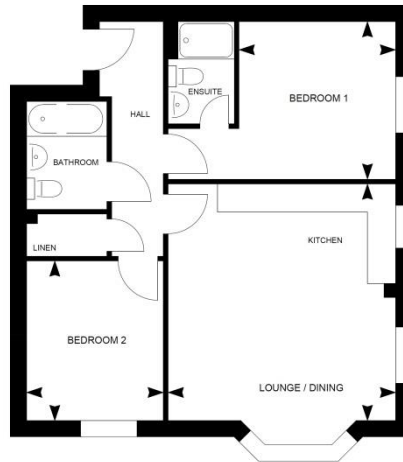


## Apartments (Plot 6)

### First Floor



Living/Kitchen  
Bedroom 1

4.84 x 5.04 / 15'10"\* x 16'6"  
3.33 x 3.36 / 10'10" x 10'10"

Bedroom 2

2.91 x 3.40 / 9'6" x 11'1"

701sqft

#### Specification:

##### Kitchen

- Contemporary kitchen design with Silestone worktops and upstands
- 1 ½ bowl stainless steel sink
- Bosch integrated single oven
- Gas burner hob
- Chimney hood and extractor fan
- Bosch integrated fridge/freezer
- Bosch integrated dishwasher
- Bosch integrated washer/dryer
- Luxury vinyl tile flooring to kitchen area

##### Bathroom and en-suite

- White Roca sanitary ware with contemporary chrome fixtures and fittings
- Ceramic floor tiling to main bathroom and en-suite
- Thermostatic shower upgrade to main bathroom
- Half height tiling to walls with sanitaryware and full height tiling to shower enclosure
- Chrome heated towel rail to main bathroom and en-suite
- Shaver socket and light to bathroom and en-suite

##### General Internal

- Master media point to lounge receiving Digital/SkyQ
- TV points to lounge and master bedroom
- Telephone points to lounge, master bedroom and home office
- Low energy light fittings
- LED down lighters to lounge, hall bathroom and en-suite
- Spur for future alarm system
- Video/Audio entry system to communal front door
- White PVC double glazed windows
- Thermostatically controlled heating by radiators
- White satin finish to all joinery
- White smooth finished ceilings with coving
- 10 year LABC warranty

##### External

- Fully turfed rear communal garden
- Brick built bin and cycle store
- Close board fencing with timber posts larch lap panels to communal garden boundaries
- Allocated parking space

*\*All dimensions are maximums and these floor plans are for representation purposes only*

All dimensions are maximum and these plans are for representation purposes only and may be subject to change. Whilst every attempt has been made to ensure the accuracy of the plans, details and measurements are approximate and no responsibility is taken for any error, omission or mis-statement.