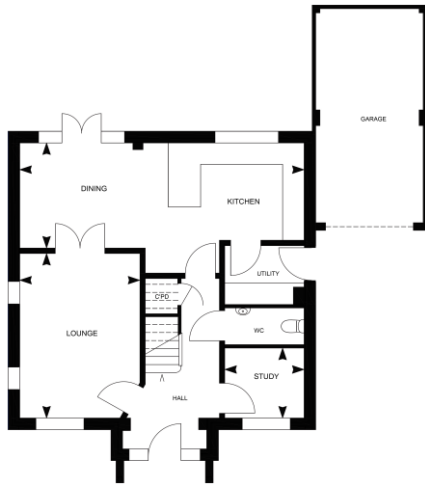
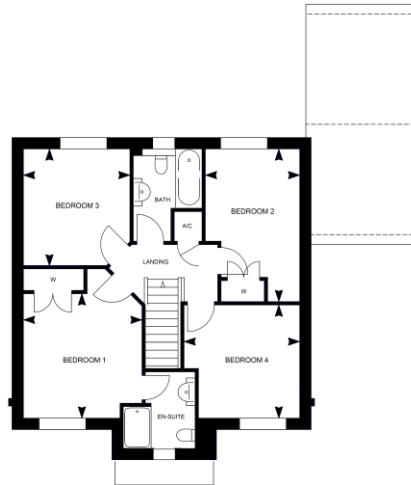


The Hurstbourne

Plots 103 & 105



Kitchen/Dining	7.92 x 2.94* / 26' x 9'8''*
Lounge	3.35* x 4.60* / 11'1" x 15'1''*
Study	2.20 x 1.96 / 7'2" x 6'4"



Bedroom 1	3.40* x 3.56* / 11'1''* x 11'7''*
Bedroom 2	2.71* x 4.37* / 8'10''* x 14'3''*
Bedroom 3	3.06* x 3.34* / 10'1" x 10'11''*
Bedroom 4	3.32* x 3.24* / 10'10''* x 10'7''*

1351sqft

Specification:

Kitchen

- Contemporary kitchen design with Silestone worktops and upstands
- 1 ½ bowl stainless steel sink
- Bosch integrated single oven & combi microwave
- Gas burner hob
- Chimney hood and extractor fan
- Bosch integrated fridge/freezer
- Bosch integrated dishwasher
- Ceramic floor tiling

Utility room

- Laminate worktops and upstands
- Space and plumbing for washing machine
- Space and plumbing for tumble dryer
- Single bowl stainless steel sink
- Ceramic floor tiling

External

- Single garage and allocated parking
- Fully turfed rear garden
- Riven style patio slabs
- Timber lockable shed with pitched roof
- Close board fencing with timber posts to site boundaries and larch lap panels with timber posts between rear gardens
- Block paving to driveways

Bathroom and en-suite

- White Roca sanitary ware with contemporary chrome fixtures and fittings
- Ceramic floor tiling to main bathroom and en-suites
- Thermostatic shower to main bathroom
- Half height tiling to walls with sanitaryware and full height tiling to shower enclosure
- Chrome heated towel rail to main bathroom and en-suite
- Shaver socket and light to bathroom and en-suite

General Internal

- Master media point to lounge receiving Digital/SkyQ
- TV points to lounge, kitchen/diner, master bedroom and bedroom 2
- Telephone points to lounge, master bedroom and home office
- Satin chrome finish sockets and switch plates
- Low energy light fittings
- LED down lighters to kitchen, bathroom, en-suites and WC
- Wired door bell and spur for future alarm system
- Lighting and power point to garage
- White PVC double glazed windows
- Thermostatically controlled heating by radiators
- Built in wardrobes to master bedroom and bedroom 2
- White satin finish to all joinery
- White smooth finished ceilings with coving
- 10 year LABC warranty

**All dimensions are maximums and these floor plans are for representation purposes only*

All dimensions are maximum and these plans are for representation purposes only and may be subject to change. Whilst every attempt has been made to ensure the accuracy of the plans, details and measurements are approximate and no responsibility is taken for any error, omission or mis-statement.